



**TOOLS HUB TRADING &ENGINEERING  
COMPANY Ltd**

**Dealers in : LPG & Welding Equipment / seamless and fitting**

**Location**

Gisozi

**Contacts**

Tel. +250-786-087-669

Mob. +250-788-809-292

Email: [info@toolshub.tradingeng.com](mailto:info@toolshub.tradingeng.com)  
[toolshubengineering@gmail.com](mailto:toolshubengineering@gmail.com)

Facebook. Tools Hub Trading Ltd

**Website:** [www.toolshub.tradingeng.com](http://www.toolshub.tradingeng.com)

## INTRODUCTION

**Tools hub trading & Engineering Ltd** is a leading specialist Civil, Mechanical & Electrical contractor within East Africa with a history dating back to January 2019 in Rwanda. TOOLS HUB is an ISO 9001-2008 certified company for quality management system In Kenya and East Africa, offering a wide range of services including Design, Consultation, Supply, Installation and Commissioning of Central Gas Systems, LPG Cylinders Distribution, LPG – Bulk Distribution and LPG Systems Preventive Maintenance.

### Mechanical

We are one of the most prominent mechanical contractors of choice for major Clients in oil and gas industry in Kenya. The company has also a fairly firm footprint for similar works in countries within East and Central Africa.

We specialize in the construction of EPC projects including LPG design and installations of oil and gas storage depots, piping systems, petrol stations, storage facilities, Structural works, and steam and gas exchange infrastructure, among other Mechanical task specifics.

The specifics are as follow;

- Mechanical / Structural Design and constructions.
- Factories fabrications and Installations, **Mild Steel, Stainless Steel**, Equipment's Installations and maintenance.
- Installation, Repair and maintenance of Industrial, Domestic LPG, Firefighting and Fireprotection systems.
- Installation Repair and maintenance of Petroleum Storage Handling Facility including Tank cleaning, Pumps, Compressors, Generators etc.
- Installation, Repair and maintenance of Industrial, Pneumatic, Hydraulic, Generators, aircompressors.
- Pumps: Centrifugal and Submersible, Tokhem (Electronic dispensing and Mechanical consumer) pumps installation, repair and maintenance,
- Machines Installation, repair and maintenance
- Mechanical Fabrications and structural installation
- Process Piping, lugging and cladding
- Instrumentation and electronics
- Sand Blasting and spray painting
- Hydrostatic test

### **2.0** Electro-Engineering

**Tools hub trading & Engineering Ltd** is among key players in the field of electro-engineering within East and Central Africa.

We have undertaken various projects such as electrical cabling of power sub-stations, and entire oil storage depots.

We design, develop and maintain electrical control systems and components to required international standards. We are involved in projects right from concept stage, detailed design through to execution, testing, commissioning and formal hand-over.

Other works handled by Tools Hub include;

- Electrical audit (Inspection and Testing), Installation, repair and maintenance
  - Refrigeration and Air Conditioning Cold rooms, Chillers, Refrigeration and Air Conditioning Installations, repairs and maintenance
  - Electrical installation, maintenance and repairs, Lighting and Electrical safety
  - Low voltage circuitry calibration (instrumentation and controls adjustment)
  - Power factor correction plants and stabilizers
  - Installation of high voltage power control panels, switch gears, distribution boards, autochange over systems from mains power to standby generators
  - Electronics, solar power accessories installation and maintenance
-

### 3.0 Civil

We are among the leading civil contractors in Rwanda and within the East and Central Africa Region.

We have undertaken various significant projects in form of commercial, schools and residential buildings, besides notable roads and earthworks assignments.

- a. Structural Design and Erection
- b. Materials and Concrete Technology
- c. Measurements
- d. Architectural and draftsmanship
- e. Estimating and Costing
- f. Soil Mechanics, Hydraulics and Geology
- g. Surveying
- h. Building Design and Building Construction Management

### 6.0 COMPANY ACTIVITY RANGE:

Since the establishment of the company, **Tools Hub** is specialized in five different divisions namely;

1. Mechanical
2. Civil/Structural
3. Electrical
4. Transport & Supplies
5. Labor Supply

### 7.0 Vision Statement

---

Tools Hub Engineering continues to move forward and become the leading Engineering and Construction firm in East and Central Africa and eventually the continent, while delivering projects that consistently meet international standards.

## 8.0 Mission Statement

With a well-defined direction in place, the path to realizing our Vision is based on fundamental drivers, instrumental in achieving our goals.

## 9.0. Our mission:

To undertake the engineering and construction business with a focus on becoming the leader in product costing while building excellence in every aspect to meet customers stringent requirements regarding quality, on-time delivery, safety and environmental concerns.

To further develop our corporate strengths we have established a corporate mandate to maintain strong core values that truly reflect the company's philosophy.

Having stood the test of time, transparency and good corporate governance remain our top agenda. At Tools Hub the principles supporting this philosophy are permanently ingrained in our corporate values.

## 10.0. People

At Tools Hub, we recognize the value of our people and continually strive to develop human resources. We recruit knowledgeable and highly skilled professionals while providing opportunities in training and self-development.

## 11.0 Commitment

**Tools Hub's** commitment to deliver quality projects and services has resulted in the company's acceptance as one of the leading engineering and construction firms in the region. Our well-defined understanding of client specifications and their requirement for a timely delivery, has served as the principal foundation for our acceptance as an industry leader.

## 12.0 Integrity

Over the years, we have gained a reputation for integrity and trust from our customers. Our commitment and drive for success has built a solid base of satisfied customers who continue to use our services time and again.

---

Tools Hub's integrity speaks for itself and a legacy of past projects has ensured continued success while opening doors for future opportunities.

### *13.0 Adaptability & Flexibility*

Understanding our clients has given us the opportunity to adopt various engineering requirements to meet project demand. This includes the flexibility to adjust construction specifications when necessary. All of our projects are custom built and tailored to meet specific requirements; this adaptability and flexibility are key factors that have encouraged our clients to return to Tools Hub for their most important projects.

### *14.0 Continuous Learning*

At **Tools Hub**, learning is ongoing. We believe in integrating the latest in construction and engineering technology to ensure that our projects are not compromised by disruptions or obsolescence.

### *15.0 Trust*

With years of construction and engineering expertise under our belt, **Tools Hub** has earned the trust and support of clients. With numerous repeat customers, we are confident in our ability to deliver superior products in accordance with customer requirements.

### *16.0 Customer Satisfaction*

At **Tools Hub**, we believe that the **“CUSTOMER”** is the **“KING”** and our work is never complete without the final nod of approval from our clients. Construction and engineering work is processed through stringent quality control measures and only after tedious inspection and tests is the project handed over to the client. We are committed to our clients' approval and our work is not complete until all specifications have been met.

## 17.0 MISSION STATEMENT

Our mission statement is “Prompt, **Affordable, Quality products and services delivery**”.

### a) Prompt

- This is the timeliness of the delivery of the products and services
- Elimination of the avoidable and necessary delays.

### b) Affordable

- The cost consciousness to the customer
- Ensuring that our costs are very competitive, realistic and reliable.

### c) Quality

- Observation of the operational standards for products and services.
- Maintaining the environmental friendliness.

### d) Delivery

- Making unique products and services accessible to the customers.
- Ensuring that the customer needs and wants are taken to the site of utilization.

# Tools Hub Engineering Solutions

## ENVIRONMENTAL, HEALTH AND SAFETY POLICY

**Tools Hub Engineering Solutions Limited**, all divisions is committed to managing environmental, health and safety (HSE) matters as an integral part of our business. We will provide our clients with responsive, safe and reliable services while adhering to the ideals of sustainable environmental management requirements. We believe that sound environmental, health and safety policy contributes to our competitive strength and benefits our clients, shareholders, and employees by contributing to the overall wellbeing and economic health of the communities we serve.

We will do so by adhering to the following principles:

### COMPLIANCE

We will comply with all applicable laws and regulations and will implement programs and procedures to assure compliance. Strict compliance with HSE standards will be key ingredient in the training, performance reviews and incentives of all employees.

Where existing laws and regulations are not adequate to assure protection of human health, safety and environment, we will establish and meet our own HSE quality standards.

### PREVENTION

We will employ management systems and procedures specifically designed to prevent activities and/or conditions that pose a threat to human health, safety or the environment. We will minimize risk and protect our employees and the communities in which we operate by employing safe technologies and operating procedures, as well as being prepared for emergencies.

We will strive to prevent releases to the atmosphere, land or water. We will minimize the amount and toxicity of waste generated and will ensure the safe treatment and disposal of waste.

### COMMUNICATION

We will communicate our commitment to HSE quality to our employees, suppliers and Clients. We will solicit their input in meeting our HSE goals and in turn will offer assistance to meet their goals.

### CONTINUOUS IMPROVEMENT

We will continuously seek to adhere to these principles, and will periodically report to our stakeholders

**MANAGING DIRECTOR**

**2022 /2023**

## 18.0 MANAGEMENT TEAM

We have a dynamic management team of Mechanical Engineer, Quality Specialist (standards), Management Specialist (MBA), Electrical Engineer, Civil Engineer, and Marketing Specialist. The Management Team is supported by well experienced Technicians, Logisticians, Accountants, Auditors, Operations officers and Human Resources officers.

The management team is very proactive. We constantly evaluate our range of services with a view to positioning the products and services with a view to always meet the customer needs.

## 19.0 HSE (HEALTH, SAFETY AND ENVIRONMENT)

The management team has a programme to ensure that the training and development of staff is undertaken to equip the staff with the latest technology, and make them ready for succession.

- a) SAFETY** - It is the responsibility of individual member of staff to;
- observe safety rules and procedures established by supervisory staff or client's Administrative heads of the team and the Company;
  - be safety-conscious in all activities, be they work, study or recreation;
  - report as soon as possible any accident, injury, unsafe condition, insecure condition or threats to personal security to a supervisor or clients administrative head of unit;
  - use properly and adequately care for personal protective equipment provided by the Company;
  - Participate, if elected or appointed, on departmental or building safety committees.
- 

### **b) Policy Purpose**

To articulate, **Tools Hub** objective of providing a safe, healthy and secure environment for all members of staff to delineate responsibility for achieving it.

### **c) Safety Procedure Summary**

It is the responsibility of the Tools Hub ltd acting through site engineers and supervisors' heads of crews to:

- provide a safe, healthy and secure working environment;
- ensure regular inspections are made and take action as required to improve unsafe conditions;
- provide first aid facilities where appropriate;
- support supervisors and safety committees in the implementation of an effective health, safety and security program;
- establish department or building safety committees;
- communicate with the client or affected groups about events or situations when potentially harmful conditions arise or are discovered;
- Ensure adequate resources are available to implement appropriate procedures.

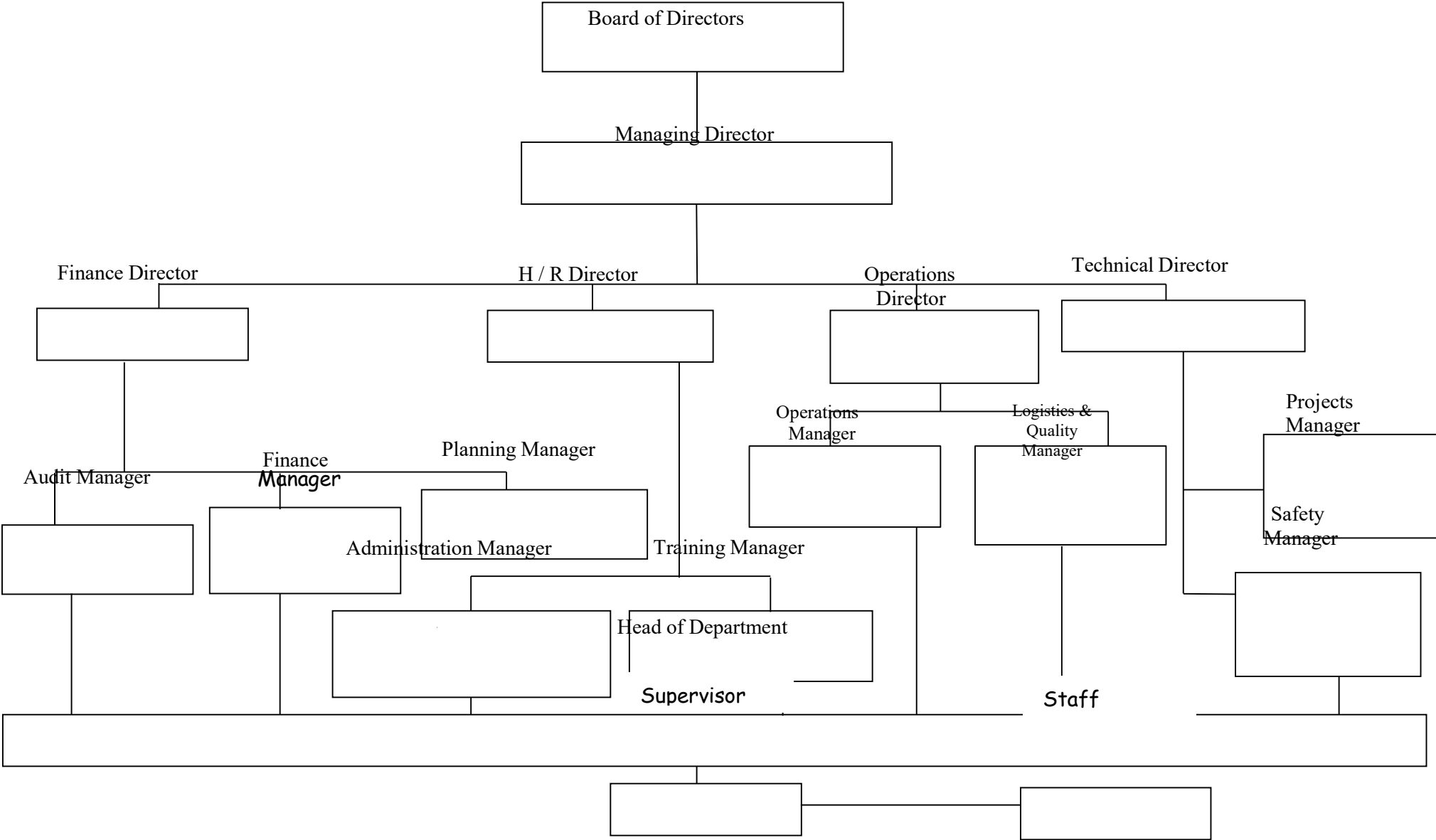


**d) ENVIRONMENTAL, HEALTH & SAFETY (EHS) MANAGEMENT PLAN (2018 - 19)**

| <b>EHS Component</b>                 | <b>Action Plan</b>   | <b>Responsible</b> | <b>Target</b>        |
|--------------------------------------|--|--------------------|----------------------|
| 1. HSE Group Policy                  | Develop, implement and circulate EHS Policy                            | MD                 | 2018                 |
| 2. HSE Management Plan               | Develop an EHS management plan for 2006-2007                           | HSE Director       | 2018                 |
| 3. HSE Director                      | Appoint an EHS Director  | MD                 | 2018                 |
| 4. HSE Training                      | Develop an EHS training program for all employees                      | EHS director       |                      |
| 5. HSE personal protective equipment | Provide all employees with adequate PPE for all respective assignments | HSE Director       | Continuous           |
| 6. HSE Risk assessment               | Conduct risk assessments before commencement of all Contracts          | Site Manager       | All Contracts        |
| 7. HSE Audits                        | Conduct EHS audit for all major contracts                              | HSE Director       | Every major contract |
| 8. HSE Management review             | Conduct annual HSE management reviews and implement action plans       | MD                 | Annually             |

# Tools Hub Trading & Engineering Ltd

20.0 ORGANISATIONAL CHART



*“Reliability & Excellence”*

## 21.0 PROJECTS UNDERTAKEN

We offer a broad spectrum of services, for example, Mechanical engineering, Electrical engineering, Civil engineering, Quality assurance and Manpower supplies Equipment Supplies. A qualified and experienced officer heads each discipline. Our services are very competitive due to the availability of well-trained and experienced engineers and Technicians.

| CLIENT       | TYPE OF WORK PERFORMED      | PLACE        | YEAR | VALUE IN USD | PROJECT YEAR |
|--------------|-----------------------------|--------------|------|--------------|--------------|
| KPA          | PIPELINE INSTALLATION       | MSA<br>KENYA | 2018 | 1,800,000.00 | COMPLETED    |
| KPRL         | JV PIPELINE<br>INSTALLATION | MSA<br>KENYA | 2019 | 8,640,000.00 | ONGOING      |
| KEHNHA       | PIPELINE INSTALLATION       | MSA<br>KENYA | 2019 | 1,430,000.00 | COMPLETED    |
| MBARAKI BULK | REABILITATION               | MSA<br>KENYA | 2020 | 900,000.00   | ONGOING      |
| SP           | TANK CONSTRUCTION           | RWANDA       | 2019 | 800,000.00   | COMPLETED    |
| KENHA /KPRL  | PIPELINE CONSTRUCTION       | KENYA        | 2020 | 1,400,000.00 | COMPLETED    |

**22.0 Supplies:** We offer

- Skilled manpower
- Technical products
- Plant moving machines
- Fittings and Consumables
- Site Materials

1. We have a data bank of qualified skilled manpower and general manpower.
2. Essentially, we are in touch with Manufactures of Technical products in Kenya and Overseas
3. We also supply all the Fittings, Pipes, and Valves as the need may arise.

**Tools Hub** is also an International Company for Import & Export. **Tools Hub** with its long history and prominent presence in international market has a very successful business relationship with its suppliers and clients in many parts of East Africa and beyond.

**1.0 Sources of company workforce:**

The Company has grown from a workforce of Twenty-five in December 2007 to the current workforce of 272 full time employees in Kenya. The Company from time to time employs people on contract for specific duties that a project may require and maintains a database of various professionals who have engaged in case of need. The Company also works closely with other Contractors and Professionals either as the main or subcontractor; the Company takes full responsibility of the contract and is answerable for the whole contract.

The Company's success depends mainly on the performance and competence of the staff.

A full detail of workforce is as follows;

## 24.0 BANKERS

---

Our Bankers are: -

- a) *ECOBANK –RWANDA/UDS&RWF*

## 25.0 CONCLUSION

We have what it takes to delight the customer. To **US, Tools Hub** the **CUSTOMER** is the **KING** and we strive to exceed the needs of the customer. **Tools Hub Trading & Engineering Limited** may have not been in the market longer but the competencies of the board of directors and the staff is enough proof of what she is, has and can do. *“We are committed to Reliability and excellence”*.

### a) STRATEGIC ASPECTS

**Our 5 main competitive advantages are;**

- i) Doing high quality work is our top priority in identifying with our clients
- ii) Employment creation is our inspiration (as opposed to super-profits) for the society
- iii) Tax compliance is our joy in nation building alongside obedience to all the laws governing our operations

**Our main investment or innovation projects for the 5 coming years are;**

- i) Capacity enhancement for machineries and warehousing.
- ii) Certification by International Accreditation bodies for local and foreign recognition.
- iii) To double the company market share and to capture the region

## PROJECTS PICTORIAL



AGOL LPG PLEMB FABRICATION KENYA



AGOL LPG PIPE CONSTRUCTION KENYA



AGOL LPG PIPE LINES INSTALLATION MSA KENYA



AGOL LPG PIPE LINES CONSTRUCTION KENYA





AGOL LPG PIPE CONSTRUCTION MSA



AGOL LPG PIPE CONSTRUCTION MSA



MPIKA DEPOT CONSTRUCTION ZAMBIA



MPIKA DEPOT CONSTRUCTION ZAMBIA





MPIKA DEPOT FIRE PIPE LINES ZAMBIA



MPIKA PUMP INSTALLATION ZAMBIA



MPIKA DEPOT CONSTRUCTION ZAMBIA



MPIKA DEPOT CONSTRUCTION ZAM



**TOOLS HUB FABRICATION WORK SHOP**



**TOOLS HUB FABRICATION WORK SHOP**



**TOOLS HUB FABRICATION WORK SHOP**



**TOOLS HUB FABRICATION WORK SHOP**



**COMPLY LTD CYCLON FABRICATION**



**COMPLY LTD CYCLON FABRICATION**



**FABRICATION UNHCR DADAAB FUEL TANK**



**FBRICATION UNHCR DADAAB FUEL TANK**





PETROCITY DEPOT KONZA PROJECT



PETROCITY DEPOT KONZA PROJECT



PETROCITY LOADING GANTRY KONZA PROJECT



PETROCITY LOADING GANTRY KONZA PROJECT





BAKRI INTERNATIONAL DEPOT



BAKRI INTERNATIONAL DEPOT



BAKRI INTERNATIONAL DEPOT AWASI KSM



BAKRI INTERNATIONAL DEPOT AWASI KSM



**GULF ENERGY FUEL & LPG DEPOT NAIROBI**



**GULF ENERGY FUEL DEPOT NAIROBI**



**TRANSFORMER INSTALLATION MATADI CONGO**



**LEREXCOM ELECTRICAL MATADI CONGO**





**LEREXCOM DEPOT ELECTRICAL MATADI**



**LEREXCOM ELECTRICAL MATADI CONGO**



**LEREXCOM DEPOT MATADI PROJECT CONGO**



**LEREXCOM DEPOT MATADI PROJECT CONGO**



LEREXCOM DEPOT MATADI PROJECT DRC



LEREXCOM DEPOT MATADI PROJECT DRC



LEREXCOM GANTRY MATADI PROJECT DRC



LEREXCOM DEPOT MATADI PROJECT



**MPIKA DEPOT TANK FOUNDATION**



**MPIKA DEPOT TANK FOUNDATION**





SP RUSORORO DEPOT KIGALI RWANDA



SP RUSORORO DEPOT KIGALI RWANDA



SP RUSORORO DEPOT KIGALI RWANDA



SP RUSORORO DEPOT KIGALI RWANDA



SP RUSORORO DEPOT KIGALI RWANDA



SP RUSORORO DEPOT KIGALI RWANDA



SP RUSORORO DEPOT KIGALI RWANDA



SP RUSORORO DEPOT KIGALI RWANDA



SP RUSORORO DEPOT KIGALI RWANDA



SP RUSORORO DEPOT KIGALI RWANDA



SP LPG INSTALLATION RWANDA